



Forever Atmosphere

classic yet contemporary

3 BHK & 4 B2HK ELEGANT FLATS



Nature Inspired

Thoughtful Planning

Feature Rich Amenities

Innovative Design Attributes

Spacious & Airy

Plush Ambience

Key Features:

- 30 m radius planning (first time in Vadodara)
- Distance between 2 towers over 10 meters
- 2-car parking for 3 BHK & 4 car parking for 4B2HK units
- Grand entrance foyer with lobby area (each tower)
- Planning with South-West Corner Open (excellent aeration)
- 8 ft door height with wooden box frame
- 1 stretcher lift + 1 passenger lift (each tower)
- Gym & Banquet Hall / Multipurpose Hall (each tower)
- Podium level & Terrace landscaped garden with club amenities

Excellent value for your investment!

In the towering houses
There's my space called home
The one where birds chirp and chatter
The one where skies find their platter

At **Forever Atmosphere**, the façade is not just about finishing and form. It is designed to reveal the status of its denizens, to highlight how they can interact and engage with each other and the surroundings and to showcase how spaces flow into each other seamlessly, fostering personal and communal atmospheres.

Conceptualized to exude a rare sense of connection with the greater atmosphere, the structure blends into the skyline with simplicity but also stands out with sophistication. It radiates the warmth of homes with a heart and displays the grandeur of high-rises with wit. It is but an eclectic mix of contradictions that fit perfectly into one other to bring you magnificence.

Forever
Atmosphere






Forever Atmosphere – About The Group

THE ATMOSPHERE GROUP Creating better lifestyles for everyone

Everyone deserves luxury, especially when it comes to one's own home. As one of the leading real estate developers, Atmosphere Group is steadfast in its focus towards creating better living experiences across the spectrum. Our projects are conceptualized to change and elevate the way you live by delivering maximum value both for you and your money. Our motto has been to deliver on time and to deliver as promised each and every time. We take extra pride in our environmental stewardship through various green initiatives across our projects. Over the years we have grown from strength to strength building landmarks that are synonymous with beauty, quality and longevity.

Our Values

-  Quality
-  Commitment
-  Team Work
-  Creativity

The Art of Fine Living

Luxury is at its best at Forever Atmosphere. Right from elegant foyers to plush reception lounges, magnificent residences to handpicked amenities, beautiful gardens to premium fixtures, every detail is crafted for extravagance. Designed to exude sophistication; the project includes all the requisites of a dream home for the heart to desire and the eyes to admire.



Light as Air. Bright as Luxury.

Architecture is not just about concrete and steel. It is more about enhancing the way people live by adding artistic soul to structures designed to stand the test of time. It is a beautiful blend of the ethereal with the real which creates edifices that steal our hearts with aesthetics and stun our minds with pragmatism.

It is what creates spaces where you do not need to give up on verdant greens for the azure skies; where the need for functionality does not overpower the thrill of beauty; where contemporary style is perfectly balanced with classical charm.

It is like **Forever Atmosphere**, where everything you feel is light as air and everything you see is bright and luxuriant.

Architects:



Architecture • Planning • Interiors



Forever
Atmosphere

Rising tall to 12 floors, at **Forever Atmosphere** you will truly enjoy living on a higher plane. Imagine breath-taking views and an exclusive lifestyle that only comes with the freedom bequeathed by unsurpassed luxury.

Lush landscaping, charming vegetation and cool waters ensure that your home is a green enclave seemingly removed from the rush of the city.

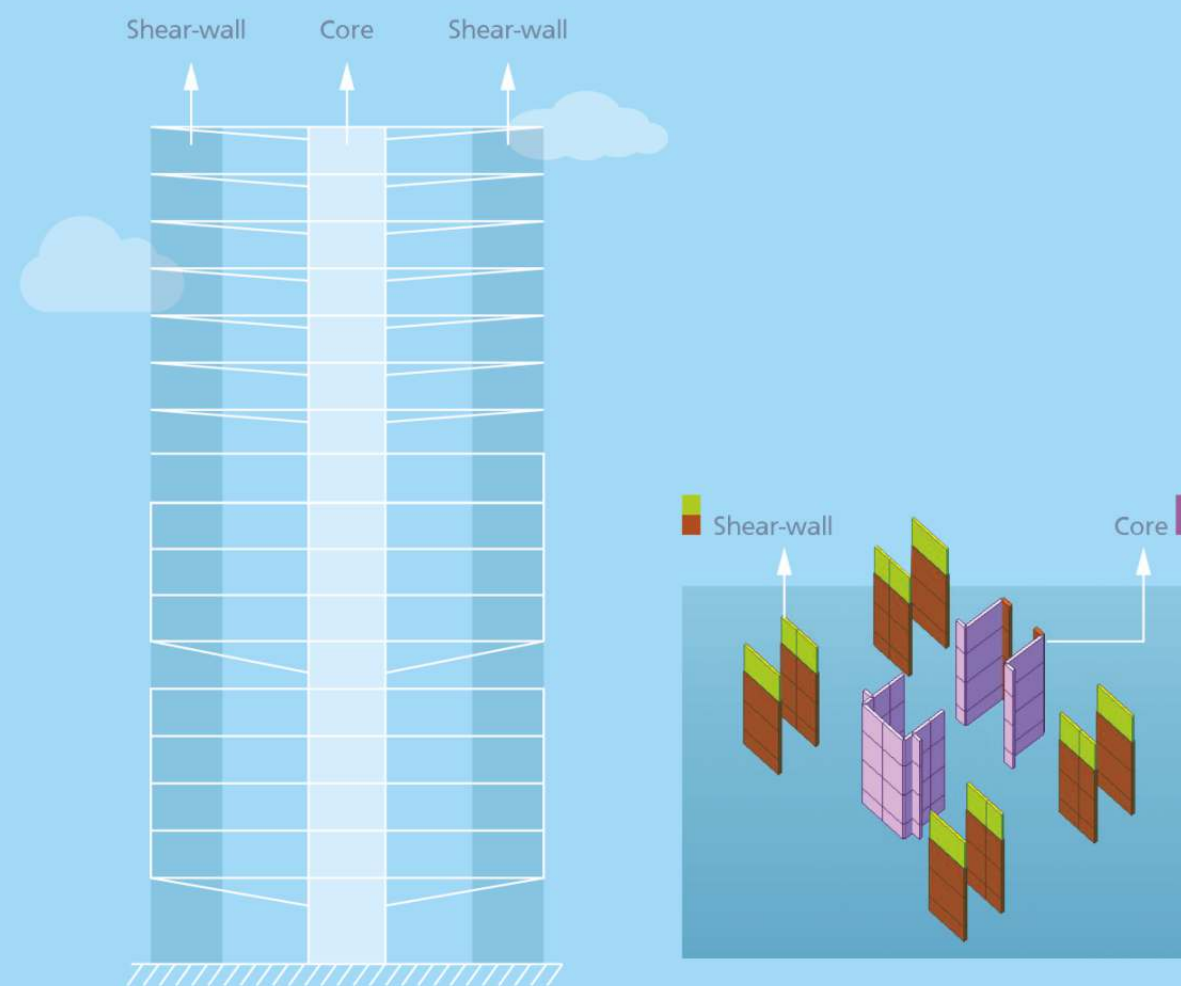
If you have ever wished for a canvas to express your personality, lifestyle and taste, you too will agree that **Forever Atmosphere** is just perfect. Bringing with it joy forever!

- terrace
 - twelfth floor
 - eleventh floor
 - tenth floor
 - ninth floor
 - eighth floor
 - seventh floor
 - sixth floor
 - fifth floor
 - fourth floor
 - third floor
 - second floor
 - first floor
 - ground
- 10' ft. floor height
-

3 BHK 4 B2HK

Core & Shear-wall Strengthened RCC Frame Structure

Structural Stability and Strength are at the heart of Atmosphere Building. **The Central Core with Peripheral Shear-Wall strengthening ensure** that Forever Atmosphere is truly forever. Along with robustness, more column free space leads to optimize interior space planning.



The Wind Will Sweep You Off Your Feet, Literally!

Atmosphere is smartly planned with an **open South West corner**. This allows for abundance of natural breeze across the whole campus.



Forever
Atmosphere

Distance is Not Always a Bad Thing

The two towers are placed **10 m** apart at Forever Atmosphere so that your privacy is not intruded. The distance also brings in a sense of openness imparting an airy ambience to the entire campus.

For added exclusivity we have gone beyond and maintained a distance of 10 ft. between 2 flats on each floor. 'Me times' will now be different from 'We times'!



We have taken care of both you and Mother Earth

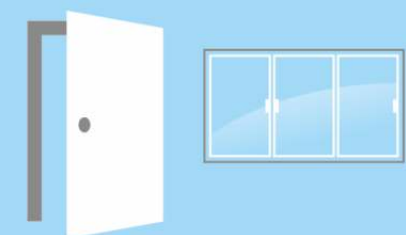
The **150 mm Outer Walls** at Forever Atmosphere, ensure superior insulation & strength. This results in energy and structural efficiency, leading to a greener planet.



'Higher' Living in the true sense

At Forever Atmosphere everything is about higher living, even the door height. The **8 feet doors** with wooden box frames and laminates reflect understated luxury.

3-track aluminium sliding windows (66% opening) with mosquito net & toughened glass.



FIRST TIME IN VADODARA
30 METERS FREE SPACE CAMPUS



Forever
Atmosphere

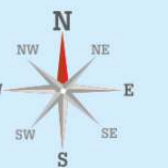
Nothing Between You and Your View

With our 30 m radius planning, we have ensured that nothing obstructs your panoramic vistas. **All balconies have at least 30 meters free space** around it to allow privacy & foster excellent aeration. Go ahead, soak in the views and touch the clouds!



— 18.00 MT WIDE ROAD —

— 18.00 MT WIDE ROAD —



First Floor Plan

- A** 4500 Sq. Ft. Landscaped Garden
- B** Wide Deck
- C** Swimming Pool
- D** Café Area
- E** Indoor Games Area
- F** Children's Play Area

Forever
Atmosphere

Open **South West** Corner

Atmosphere is smartly planned with an open South West corner.
This allows for abundance of natural breeze across the whole campus.



ENTRY

PASSAGE
A

PASSAGE
B

101 to 1201

102 to 1202

101 to 1201

102 to 1202

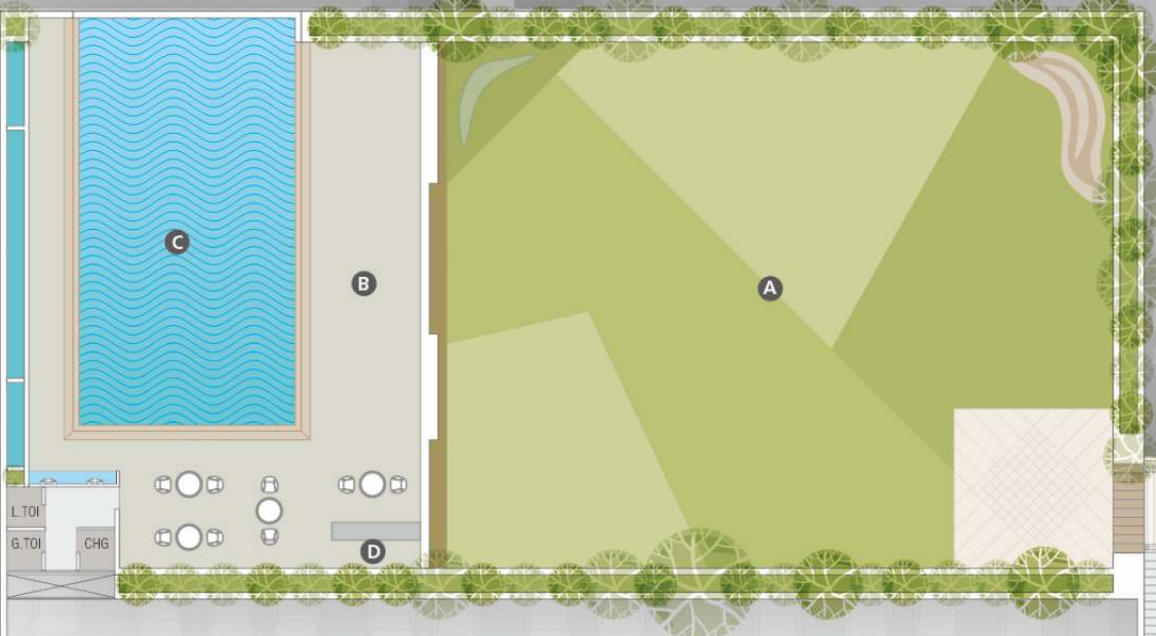
104 to 1204

103 to 1203

104 to 1204

103 to 1203

<< WAY TO BASEMENT PARKING



10' BRIDGE

E

F

In the leisure of the home
 There's the rejuvenation of senses
 The one where conversations start
 The one where relationships thrive

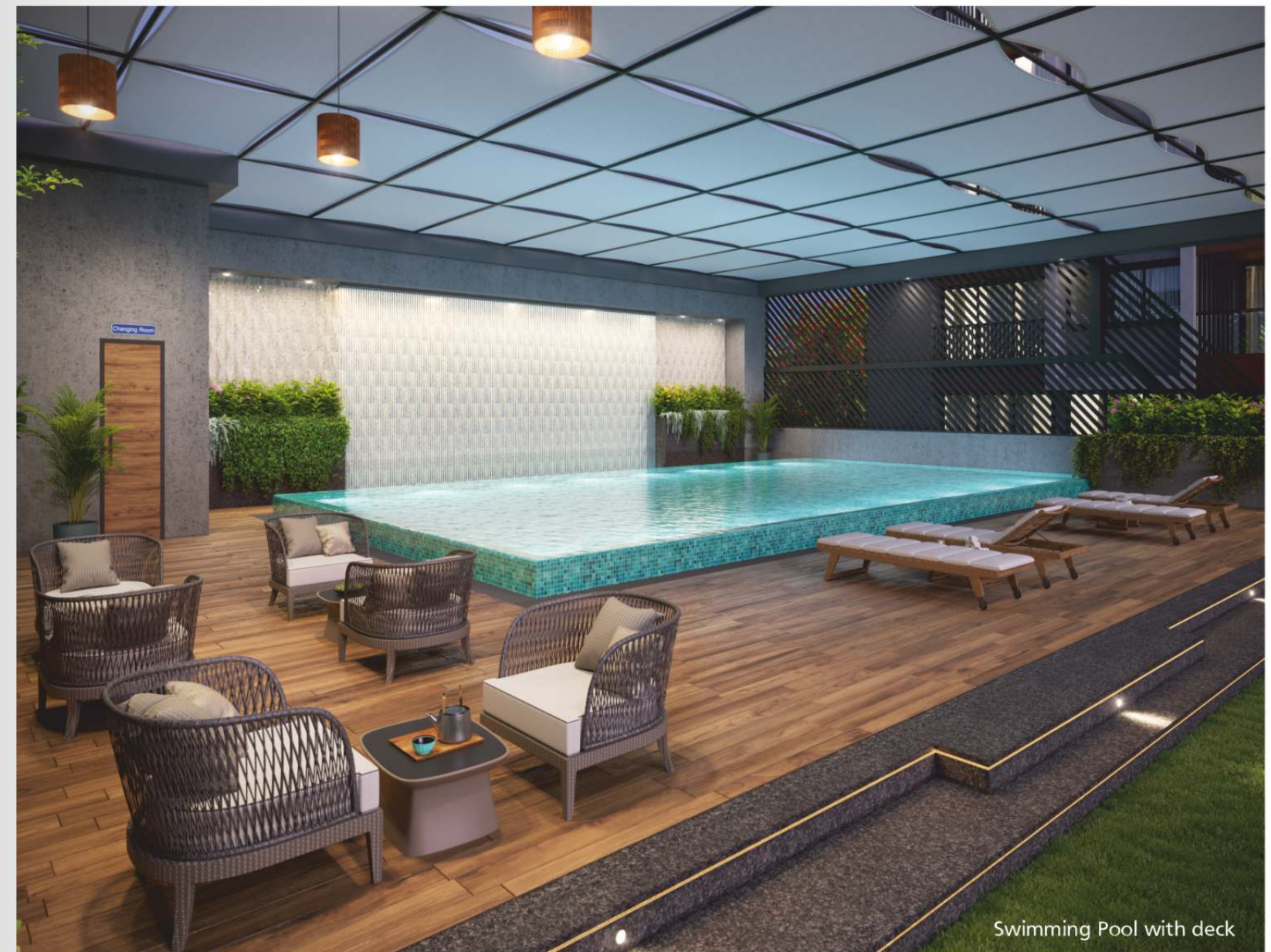
Forever Atmosphere is inspired by life in all its glory. It conforms to the specifics but also brings in the unique. Our recreational spaces are a testament to this thought. We have carefully handpicked the choicest of amenities that will add joy to your life and a little spark to make it extra special.

Gardens – one near to the ground,
 other touching the skies!

There is nothing like too much greenery, especially in high-rises. That is why we have not one but two sprawling gardens. The 4500 sq. ft. 1st level landscaped garden is great for evening strolls while the 1300 sq. ft. terrace garden is perfect for some morning yoga under the clear blue skies.



Forever
 Atmosphere



Good Health is a habit

Why worry of memberships and commutes when health is just a lift ride away? Each tower at Forever Atmosphere has a separate state-of-the-art gymnasium on the terrace.

Get Back to Games

Who said games are only for children? Challenge your neighbor to an exciting game of chess or carom whenever you need an exciting end to your day.

Find Your Rhythm

Put on your dancing boots and tango the night away at our specially designed disco floor on level one.

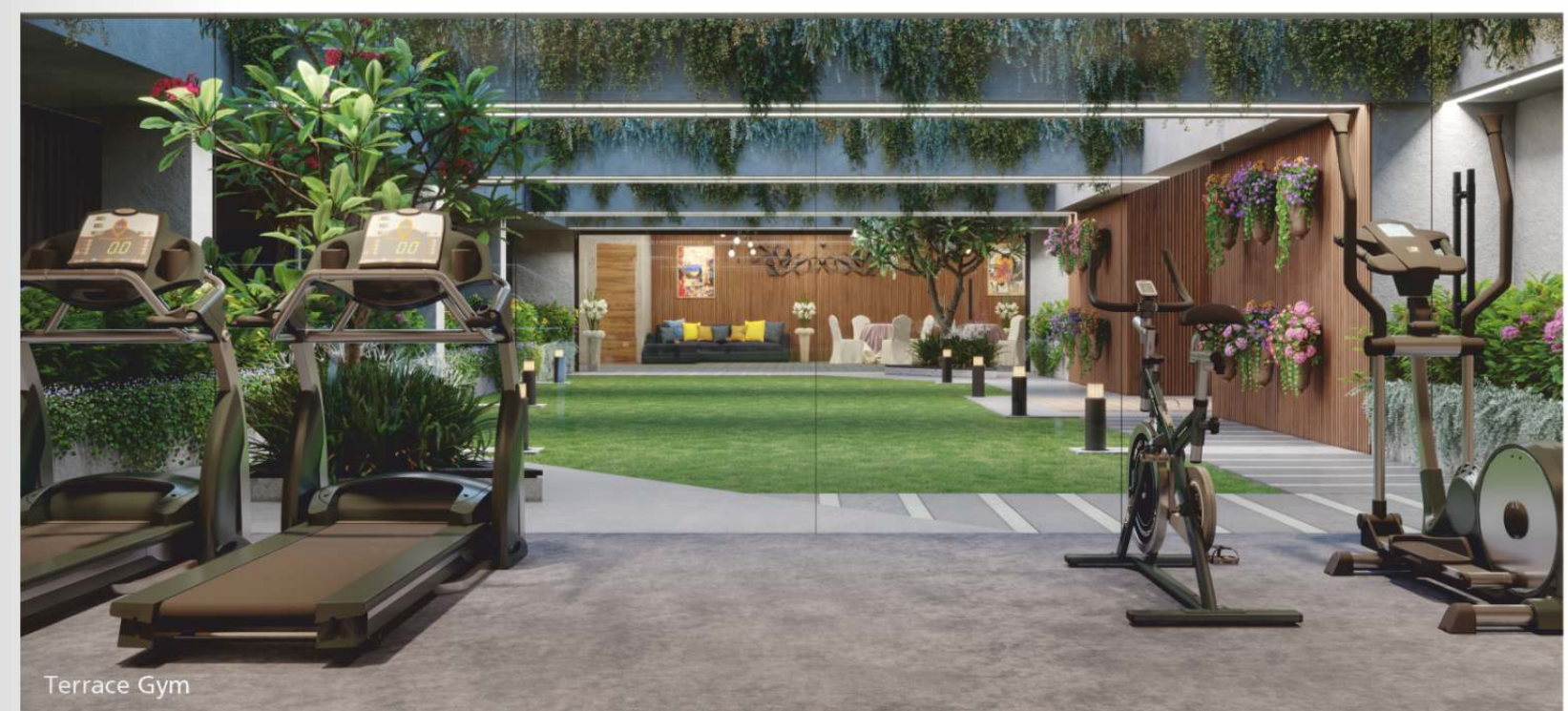
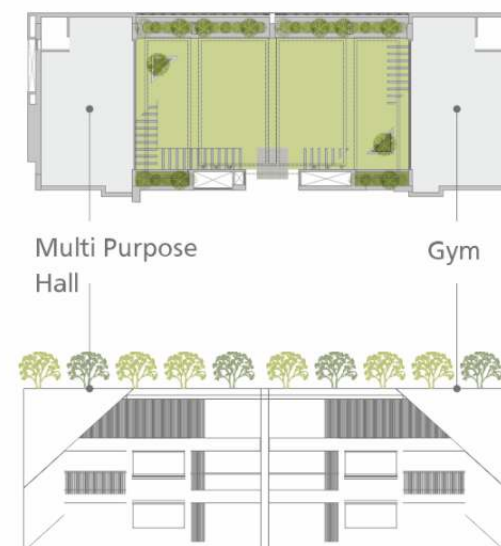
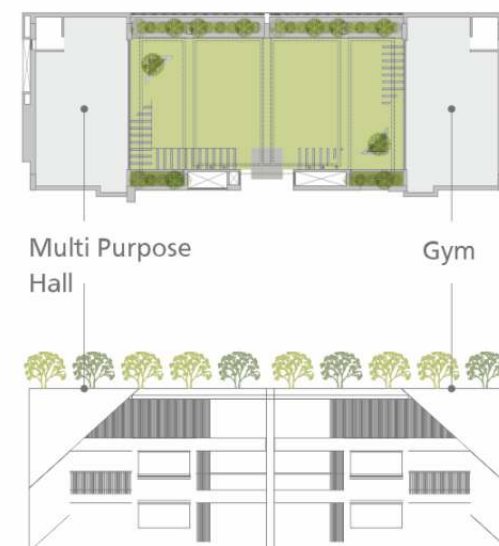
Parties, celebrations and events galore

Event on your mind? We've got you covered with a multi-purpose hall right inside the campus.

Big screen thrills right at home

Grab your popcorn and head straight to our 46-seater mini-theater for movie nights with your friends and family.

1300 Sq. Ft. Terrace Garden



Wing-A & B
3 BHK Unit
1 to 8 Floor

12
11
10
09
08
07
06
05
04
03
02
01



AS PER RERA CARPET AREA: **1158.00** sq.ft.
BALCONY + WASH AREA: **110.00** sq.ft.
TOTAL: **1268.00** sq.ft.

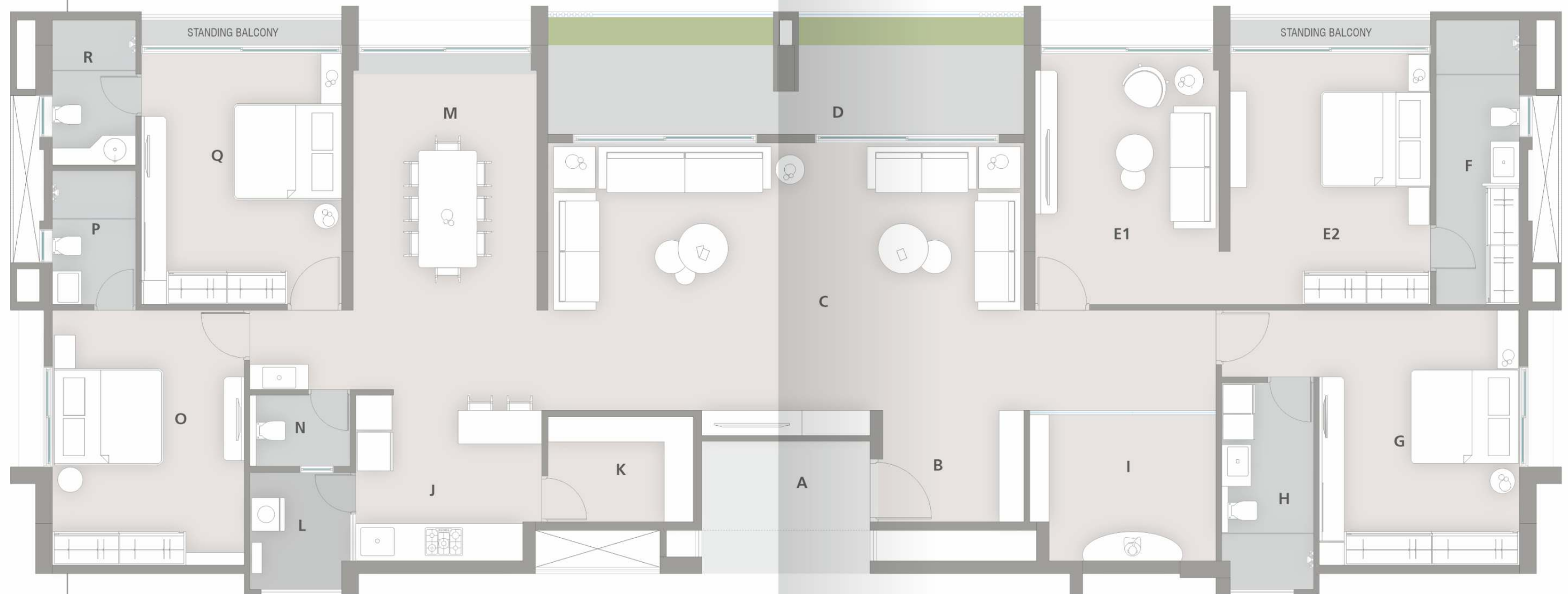
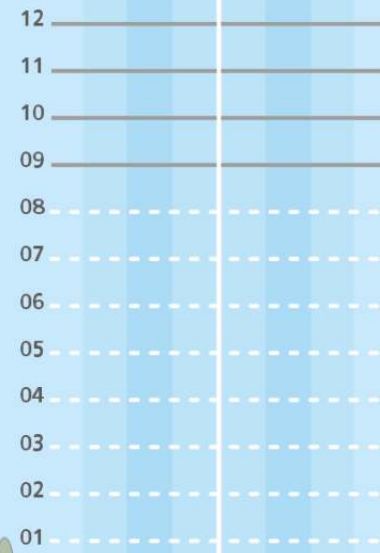
BUILT-UP AREA: **1380.00** sq.ft.

A Private Foyer	5'-0" X 6'-0"
B Foyer	5'-0" X 6'-5"
C Living Room	14'-0" X 16'-0"
D Balcony	14'-0" X 5'-0"
E Kitchen / Dining	10'-0" X 18'-6"

F Store	4'-6" X 6'-3"
G Wash	6'-0" X 6'-9"
H Toilet	6'-0" X 4'-6"
I Bedroom	11'-0" X 11'-6"
J Bedroom	12'-0" X 15'-0"

K Toilet	5'-0" X 8'-8"
L Bedroom	11'-6" X 15'-3"
M Toilet	5'-0" X 8'-0"

Wing-A & B
4 B2HK Unit
9 to 12 Floor



A	Private Foyer	10'-0" X 5'-4"
B	Foyer	8'-5.5" X 6'-8"
C	Living Room	28'-6" X 16'-0"
D	Balcony	28'-6" X 5'-0"
E1	Master Bed Lounge	11'-0" X 15'-0"

E2	Master Bedroom	12'-0" X 15'-0"
F	Toilet / Dress	5'-0" X 17'-0"
G	Bedroom	12'-0" X 15'-3"
H	Toilet	5'-6" X 12'-4.5"
I	Study / Library	11'-2" X 8'-9"

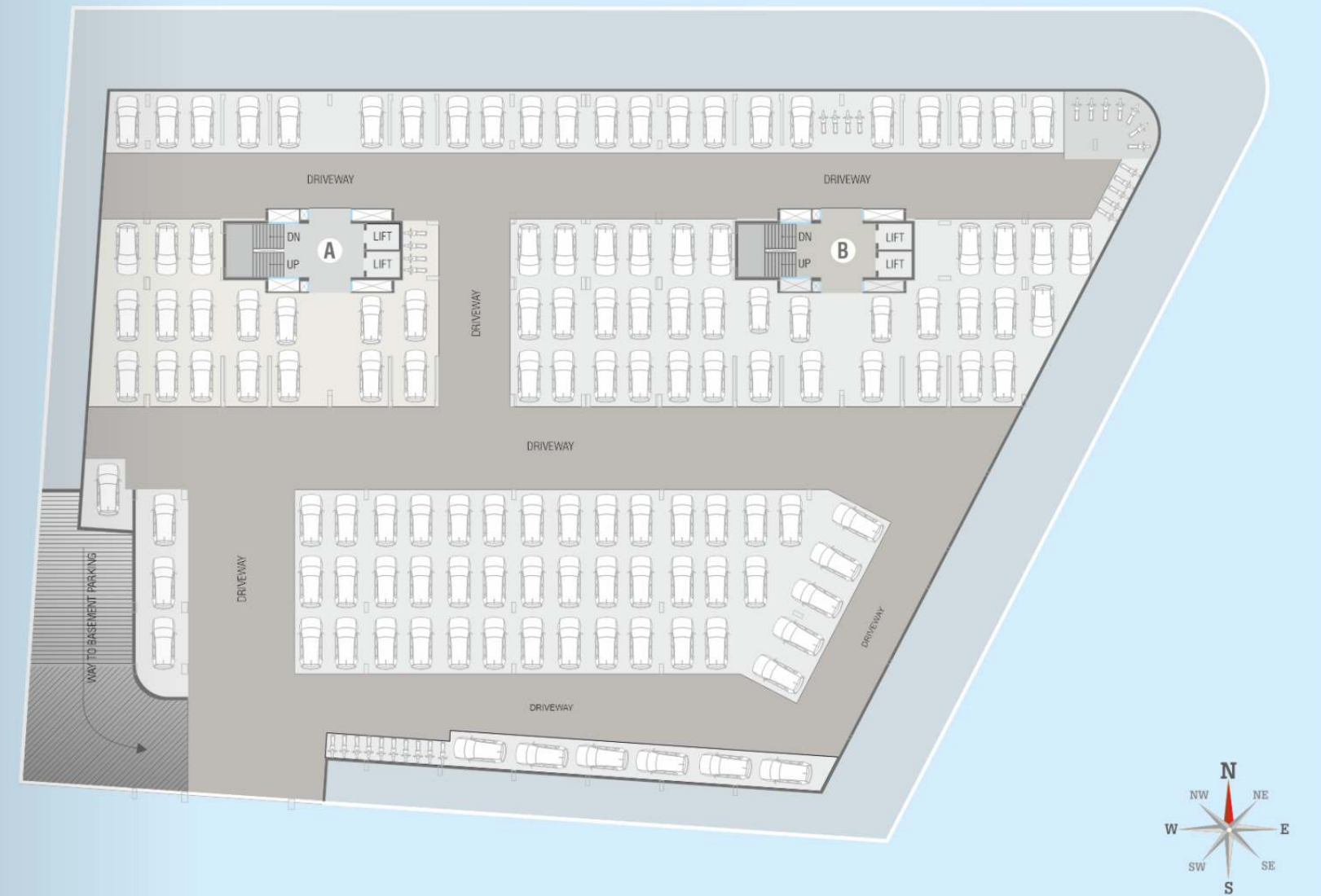
J	Kitchen	11'-1.5" X 10'-0"
K	Store	9'-0" X 6'-3.5"
L	Wash	6'-0" X 7'-0"
M	Dining Area	11'-0" X 15'-4"
N	Toilet	6'-0" X 4'-3"

O	Bedroom	15'-3" X 11'-6"
P	Toilet	5'-0" X 8'-0"
Q	Bedroom	12'-0" X 15'-0"
R	Toilet	5'-0" X 8'-8"

CARPET AREA: **2536.00** sq.ft.
BUILT-UP AREA: **2760.00** sq.ft.



Basement Floor Plan



Specifications



STRUCTURE

- Earthquake resistant R.C.C. frame structure with AAC block masonry.
- 10 ft clear ceiling height.



LOBBY & FOYER

- Matt Finish Stone Flooring with plush interiors.
- All Lobby Walls & Ceiling in paint .



WALL FINISH

- 2 Coat Putty with primer finish on internal walls.
- Weather Proof Paint on external walls.



FLOORING

- Double charged Vitrified Tiles in all rooms.
- Stairs: Stone Treads.



DOORS & WINDOWS

- Main Door: High Quality Wooden frame door with veneer paneling on both sides.
- Internal Doors: flush doors with 8 feet height. Wooden box frame & both sides laminated.
- Powder coated aluminium sliding windows with mosquito net & toughened glass.



KITCHEN

- Granite platform with S.S. Sink & Swivel Tap.
- Vitrified Tiles upto lintel height over the platform.
- Wash Area with Dado Tiles & Flooring.



BATHROOMS

- Premium ceramic tiles, Branded quality bath fittings and sanitary wares.
- Anti Skid Floor Tiles Granite Counter with Ceramic Wash Basin.
- Tiles up to lintel level in all bathrooms.



ELECTRICAL

- Concealed copper ISI wiring, MCB/ELCB & branded modular switches with sufficient electrical points in all areas.
- Provision for TV & Internet points at convenient locations.
- AC piping in all bedrooms & living room.








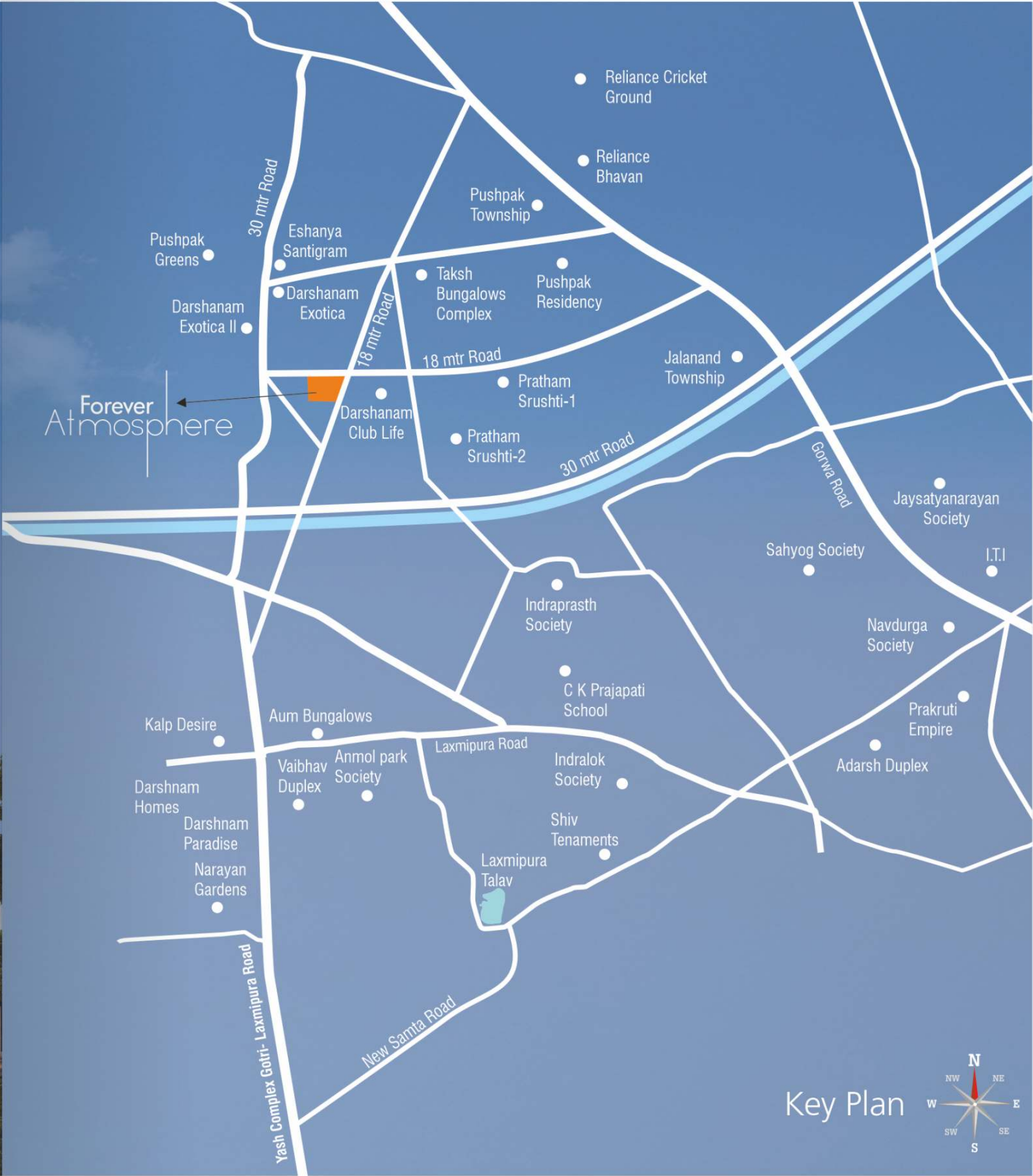
Salient Features

- | | |
|---|--|
|  2 Allotted Car Parking (3BHK)
4 Allotted Car Parking (4B2HK) |  Branded Elevators
1 stretcher lift +
1 passenger lift (each tower) |
|  Adequate Power Load to Each Unit |  Plush Entrance Foyer
with seating |
|  Power Back Up System for Lift &
Common Amenities |  Shops with 12' ceiling height |

Forever
Atmosphere

Safety & Other Features

- | | |
|--|--|
|  Gated Community with
Round the Clock Security |  Rain Water Harvesting |
|  Video Door Phone |  Fire Hydrant System with Fire Extinguisher |
|  CCTV System with Surveillance Cameras at
Strategic Locations in Common Area | |



Positioned For Access

Located in the bustling neighbourhood of new gotri, your home, Forever Atmosphere ensures that you enjoy everything from vibrant contemporary conveniences to pristine natural beauty, easy accessibility to soothing serenity. Residing at this coveted address will bring you location advantages and connectivity like no other. Whether it is the high-flying city life you want or the silence of nature that you yearn for, Atmosphere has it all!

Payment Schedule

Booking Amount Incl. Token	30%
On Plinth Level	10%
On Each Floor Slab Level	04% X 12 = 48%
On Plaster Level	04%
On Flooring Level	04%
Before Possession	04%

NOTE : • All plans are subject to amendments and approval by the relevant authorities. • All photography and computer imagery are artist's impression and are provided for illustrative and indicative purposes only. • While every reasonable care has been taken in providing this information, the Developers cannot be held responsible for any inaccuracy. • Subject to Vadodara Jurisdiction.

Location

Website

Forever
Atmosphere

FOREVER I N F R A

Site: Forever Atmosphere, Opp. Darshanam Club Life, Opp. Yash Complex 30 Mtr. Road, New Gotri, Vadodara.
Call: +91 98252 80328, 98252 80382 E.: forever2020sales@gmail.com
www.foreveratmosphere.in

design: stroke&arrow_20@9824092010

Architect: Space Plus	Structure: Comten Engineers	Landscape: La Spazio	3d Visualization: Impact Design	Plumbing: Krupalu Consultant	Electrical: Chirag Electricals
-----------------------	-----------------------------	----------------------	---------------------------------	------------------------------	--------------------------------